

**BALDOR • RELIANCE**

---

# Customer information packet

## XEFRPM21104

10HP, 1800, 460V, HL215T, TEFC, F1

## Specifications

Enclosure	TEFC
Frame	HL215T
Frame Material	Exposed Laminations
Frequency	60.00 Hz
Output @ Frequency	10.000 HP @ 60 HZ
Phase	3
Synchronous Speed @ Frequency	1800 RPM @ 60 HZ
Voltage @ Frequency	460.0 V @ 60 HZ
Agency Approvals	CCSA US NEMA PREMIUM
Auxillary Box	No Auxillary Box
Base Indicator	Rigid
Bearing Grease Type	Polyrex EM (-20F +300F)
Constant Torque Speed Range	1-60
Current @ Voltage	10.000 A @ 460.0 V
Duty Rating	CONT
Feedback Device	NO FEEDBACK
Frame Prefix	HL
Heater Indicator	No Heater
High Voltage Full Load Amps	10.0 a
Insulation Class	H
KVA Code	G
Motor Standards	NEMA
Mounting Arrangement	F1
Overall Length	21.72 IN
Product Family	Fan - Centrifugal
Pulley End Bearing Type	Ball
Pulley Face Code	Standard
Service Factor	1.15
Shaft Diameter	1.375 IN
Shaft Ground Indicator	No Shaft Grounding
Shaft Rotation	Reversible

## Part detail

Revision	J
Type	AC
Mech. spec.	
Base	
Status	PRD/A
Elec. spec.	LS7015A
Layout	619704-001
Eff. date	04-23-2019
CD Diagram	422927-001
Poles	04
Leads	
Proprietary	False
Created date	05-20-2016

<b>Speed</b>	1800 rpm
<b>Thermal Device - Bearing</b>	None
<b>Thermal Device - Winding</b>	Normally Closed Thermostat

**Nameplate**

**000613007QF**

	<b>DUTY</b>	<b>HP</b>	<b>RPM</b>	<b>AMPS</b>	<b>VOLTS</b>	<b>HZ</b>					
	CONT	10	1800	10.0	460	60					
<b>CAT.NO.</b>	XEFRPM21104		<b>SPEC. NO.</b>		H21-A000-0001						
<b>SER.NO.</b>			<b>FRAME SIZE</b>		HL215T	<b>TYPE PSM</b>					
<b>AMB.</b>	40	<b>S.F.</b>	1.15	<b>ENCL.</b>	TEFC	<b>PH</b>	3	<b>DESIGN</b>	B	<b>CODE</b>	G
<b>NEMA NOM. EFF</b>	94.6		<b>GUARANTEED EFFICIENCY</b>		93.7	<b>POWER FACTOR</b>		98.1	<b>INSUL. CLASS</b>		H
<b>D.E. BRG.</b>	45BC02J30X		<b>O.D.E. BRG.</b>		35BC02J30X						
<b>VPWM INVERTER DUTY @1.0SF</b>	<b>CHP HZ</b>	60-90		<b>CT HZ</b>	1-60		<b>VT HZ</b>	0-60			
	X/T										

---

000692000VY

---

**MEAS OPEN CIRCUIT VOLTAGE**

---

IS  VOLTS AT  RPM.

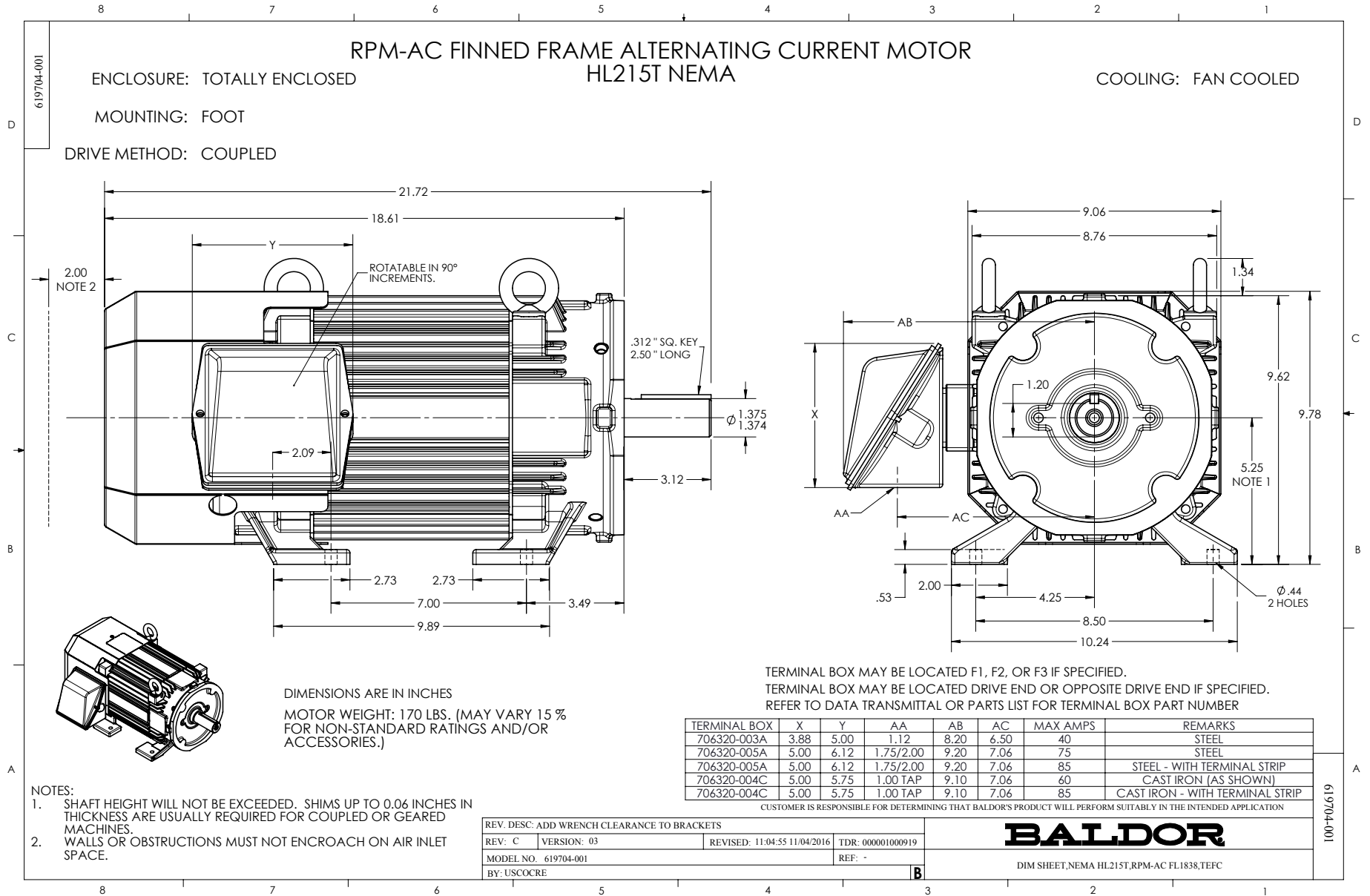
---



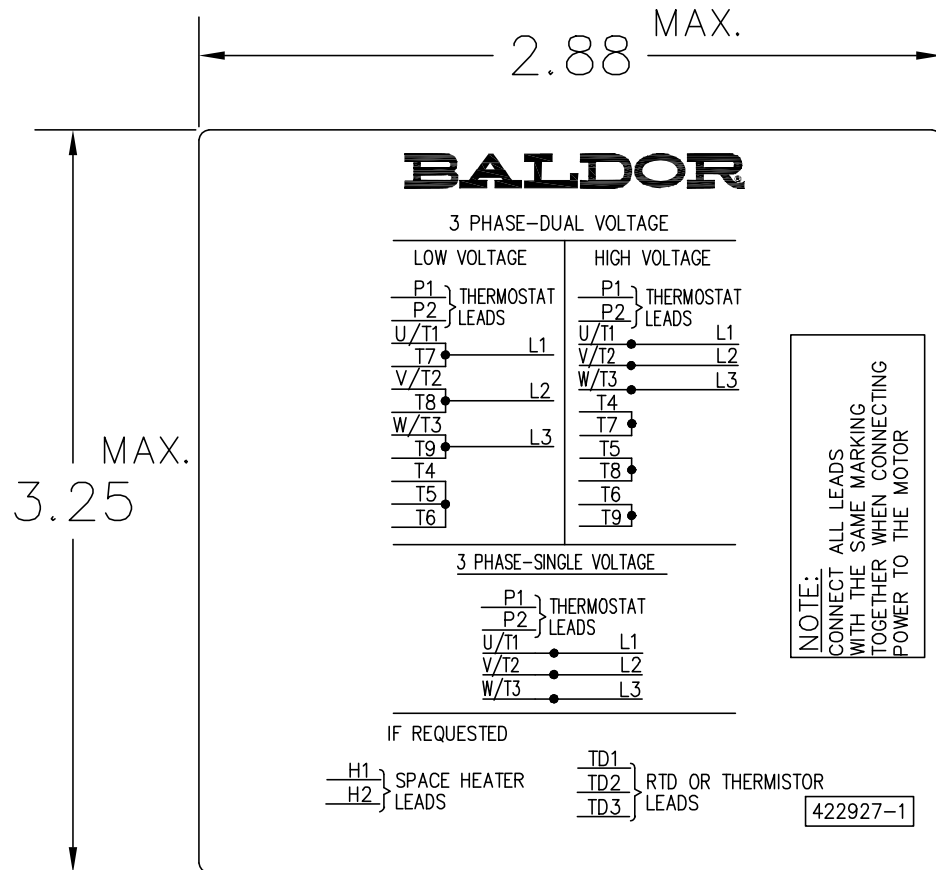








422927-001



NOTE:  
DATA TO BE SIZED  
SO THAT IT FITS INTO  
MATERIAL DECAL  
DIMENSIONS. MAKE  
LETTERS & NUMBERS  
AS LARGE AS POSSIBLE.

MATERIAL: CERAMATIC DGF-P4  
PERMA GRIP ADHESIVE

ALL LETTERS, NUMBERS  
AND LINES TO BE BLACK  
ON WHITE BACKGROUND.

422927-001

REV. DESC: CHANGE BACKGROUND COLOR FROM GOLD TO WHITE		
REV. LTR: B	VERSION: 02	TDR: 00000788708
FILE: \RGG\00000\203	REVISED: 08:09:29 03/04/2013	
MTL: -	BY: RGGWT	

**BALDOR**

EXTERNAL CONNECTION LABEL

SH 1 of 1